

CPJ-3000 CPJ-3000Z series projector

Usage

CPJ-3000Z series of projectors are photoelectric measuring system of high precision and efficiency. The image on the screen is in the same direction with the work pieces. It is widely used in the trade of mechanism, meter, electricity, light industry, college, research institute and measurement-inspecting department. This instrument can inspect all kinds of surface and outline of complicated work-pieces such as template, pressing work-pieces, cam, thread, gear, milling cutter and so on.

Specialities

CPJ-3000Z series projector is famous for its excellent quality of the optical system. It is processed of clear image and accurate magnification. The error of the contour measuring is under 0.08% under the illumination. The indication error of the coordinate is under $(3+L/75) \mu\text{m}$, (L is the length of the work pieces to be measured, unit: mm). This instrument provides the DC-3000 data processing system and foot-switch, which are convenient to output and gather the data.



Ideal table:

Loading weight > 250kg
Dimension: 800(L) * 550(W) * 650(H) mm

Specification

Model	Reverse image Erect image	CPJ-3007 CPJ-3007Z	CPJ-3010 CPJ-3010Z	CPJ-3015 CPJ-3015Z	
Working table	The metal table's size (mm)	260*152	306*152	340*152	
	The glass table's size (mm)	125*100	175*100	196*96	
	X-axis travel (mm)	75	100	150	
	Y-axis travel (mm)	50	50	50	
	Z-axis travel (mm)	90 (for focus)	90 (for focus)	90 (for focus)	
	Measuring accuracy (μm)	$3+L/75$	$3+L/50$	$4+L/25$	
	Resolution (X-axis, Y-axis)	0.5 μm			
Projector screen	Screen size (mm)	$\varnothing 312$ used range > $\varnothing 300$ (with the meter line)			
	Screen rotary range	$0^\circ \sim 360^\circ$			
	Rotary angle resolution	$1'$ or $0.01''$			
Lens	Magnification	10X (option)	20X (option)	50X (option)	100X (option)
	Object view (mm)	$\varnothing 30$	$\varnothing 15$	$\varnothing 6$	$\varnothing 3$
	Working distance (mm)	77.7	44.3	38.4	25.3
	Max. Workpiece height	90mm	90mm	90mm	90mm
Dimension	L*W*H (mm)	770*550*1100	770*550*1100	770*550*1100	
Weight	Unit: kg	120	125	130	

Data processing system DC-3000 multi-function data processing system, appearing in Chinese, can be used to gather the data and measure the point, line, circle, angle and distance.

Illumination The illumination of transmission and reflection: 24V/150W-halogen lamp.

Power 110V/220V (AC) 50/60Hz total power=400W

Cooling By three fans

Option Mini-printer, Edge detector, M2D software and so on, please refer to accessories for projector for more details

CPJ-3020W horizontal projector



Usage

CPJ-3020W \varnothing 300mm horizontal projector is a photoelectric measuring system of high precision and efficiency. It is widely used in the trade of mechanism, mould, tool, electricity and light industry. It is a must in the checking department and workshop. The instrument can inspect all kinds of surface and outline of the complicated work-pieces, such as template, cam, tread, gear, milling cutter and so on.

Specification

Working table	Working table size (mm)	400*150			
	X-axis's travel (mm)	200			
	Y-axis's travel (mm)	100			
	Z-axis's travel (mm)	75(for focus)			
	Turning range	$\pm 15^\circ$			
	Resolution(X-axis,Z-axis)	0.5 μ m			
	The indication error of coordinate(μ m)	$\leq (4+L/25)$			
Projector screen	Screen size (mm)	\varnothing 300			
	Screen rotary range	$0^\circ \sim 360^\circ$			
	Rotary angle resolution	1' or 0.01°			
Lens	Magnification	10X(option)	20X(option)	50X(option)	100X(option)
	Object view (mm)	\varnothing 30	\varnothing 15	\varnothing 6	\varnothing 3
	Working distance(mm)	77.7	44.3	38.4	25.3
Dimension	L*W*H (mm)	1090*830*1010			
Weight	Unit (kg)	160			
Data processing system	DC-3000 multi-function data processing system, appearing in Chinese, can be used to gather the data and measure the point, line, circle, angle and distance.				
Illumination	The illumination of transmission:24V/150W-halogen lamp. The illumination of reflection:21V/150W-halogen lamp. (By two fibers)				
Power Option	110V/220V (AC) 50/60Hz total power=400W Mini-printer, Edge detector, M2D software and so on, please refer to accessories for projector for more details				

Usage

CPJ-4025W ϕ 400mm horizontal projector is a photoelectric measuring system of high precision and efficiency. It is widely used in the trade of mechanism, mould, tool, electricity and light industry. It is a must in the checking department and workshop. The instrument can inspect all kinds of surface and outline of the complicated work-pieces, such as template, cam, tread, gear, milling cutter and so on.



Ideal table:

Loading weight > 350kg
Dimension: 1100(L) * 550(W) * 500(H) mm

Specification

Working table	Working table size (mm)	450*200				
	X-axis's travel (mm)	250				
	Y-axis's travel (mm)	150				
	Z-axis's travel (mm)	100(for focus)				
	Turning range	$\pm 15^\circ$				
	Resolution(X-axis,Z-axis)	0.5 μ m				
	The indication error of coordinate(μ m)	$\leq (4+L/25)$				
Projector screen	Screen size (mm)	ϕ 400				
	Screen rotary range	0°~360°				
	Rotary angle resolution	1' or 0.01°				
Lens	Magnification	5X(option)	10X(option)	20X(option)	50X(option)	100X(option)
	Object view (mm)	ϕ 80	ϕ 40	ϕ 20	ϕ 8	ϕ 4
	Working distance(mm)	93.7	103.9	95.1	65.7	35.0
Dimension	L*W*H (mm)	1215*646*1210				
Weight	Unit (kg)	240				
Data processing system	DC-3000 multi-function data processing system, appearing in Chinese, can be used to gather the data and measure the point, line, circle, angle and distance.					
Illumination	Transmission: 24V/150W, cooling by fans. Reflection: 21V/150W, illuminated by two fibers, cooling by fans.					
Power	110V/220V (AC) 50/60Hz total power=400W					
Option	Mini-printer, Edge detector, M2D software and so on, please refer to accessories for projector for more details					

CPJ-3000A CPJ-3000AZ series projector

Full erect	<i>Not be affected by upside down and division in the left and right</i>
High precision	<i>(3+L/75) μm is comparable to the accuracy of the foreign similar projector</i>
Large travel	<i>250*150*100(for the focus)</i>
Large load	<i>The accuracy remains stationary under the press of 50kg</i>
Projection box	<i>Adjust the focus by ascending and descending</i>
Edge detector	<i>Automatically aim and gather the data</i>

Specialities

This series of projectors are famous. It's for excellent quality of the optical system. It is processed of clear image and accurate magnification. The error of the contour measuring is under 0.08% under the illumination of transmission. This instrument provides the foot-switch, which are convenient to gather the data. You can adjust the focus by ascending and descending the projection box. The projector is with big travel and stationary performance because the working stable doesn't ascend or descend, and the instrument can also measure the big range with high precision.



Ideal table:

Loading weight>250kg
Dimension:800(L)*550(W)*650(H)mm

Specification

Model	Reverse image Erect image	CPJ-3015A CPJ-3015AZ	CPJ-3020A CPJ-3020AZ	CPJ-3025A CPJ-3025AZ	
Working table	The metal table's size(mm)	354*228	404*228	450*280	
	The glass table's size(mm)	210*160	260*160	306*196	
	X-axis travel (mm)	150	200	250	
	Y-axis travel (mm)	100	100	150	
	Z-axis travel (mm)	100(for focus)	100(for focus)	100(for focus)	
	Measuring accuracy(μm)	3+L/75	3+L/75	3+L/75	
	Resolution (X-axis,Y-axis)	0.5 μm			
Projector screen	Screen size (mm)	∅312 used range>∅300(with the meter line)			
	Screen rotary range	0°~360°			
	Rotary angle resolution	1' or 0.01°			
Lens	Magnification	10X(option)	20X(option)	50X(option)	100X(option)
	Object view (mm)	∅30	∅15	∅6	∅3
	Working distance(mm)	77.7	44.3	38.4	25.3
	Max. Workpiece height	100mm	100mm	100mm	100mm
Dimension L*W*H(mm)		780*780*1100	780*780*1100	780*780*1100	
Weight Unit: kg		160	160	160	
Data processing system	DC-3000 multi-function data processing system, appearing in Chinese, can be used to gather the data and measure the point, line, circle, angle and distance.				
Illumination	The illumination of transmission and reflection:24V/150W-halogen lamp.				
Power	110V/220V (AC) 50/60Hz total power=400W				
Cooling	By three fans				
Accessories	Mini-printer(option),Edge detector(option),M2D software(option) and so on, please refer to accessories for projector for more details				

DC-3000 is appropriate for digital linear scales measuring system and the video measuring system. It can analyze and process the 2D measuring data, and it is widely used in the projector, the tool microscope, CCD measuring instruments and other two-dimension measuring instrument. DC-5000 is the upgrade of DC-3000 with large LCD. It can display the data in English and simplified Chinese. Employed with 24-bit counter, the reading speed can reach 4m/s with 0.001mm resolution.



Specialities

- Systematic anti-jamming in power and signal can reach 2200V or above
- Can recall the current position after power failure
- Can work between 100V and 240V

Functions

- Measure, preset and construct the graphic elements such as the point, line, circle, angle, distance, rectangle, thread and so on
- The functions of Axis-skew and Coordinate-shift are very convenient
- Connect to foot-switch and edge detector, so can quickly gather the data
- Can print the user program, graphic elements and 3-coordinate displaying data
- The users can record the program and measure the same workpiece in large quantity
- Many coordinate displaying ways: Polarity and Cartesian, INC coordinate and ABS, Metric unit and British measurement unit
- Linear error correction and segmental linear error correction
- Z-axis can be connected with linear scales or rotary encode's degree
- Store 100 permanent data and 10 temporary data

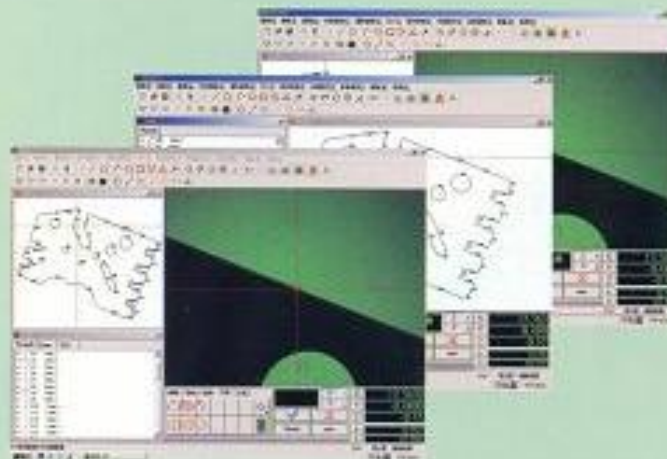
Specification

	DC-3000	DC-5000
Voltage	AC 100V-240V	
Power	The most is 15W	
Input scales signal	Orthogonality TTL, frequency <2MHz, current> 1mA	
Resolution (μm)	0.1, 0.2, 0.5, 1, 2, 5, 10	
Weight	1.49kg	1.8kg
Dimension	295*185*68(mm)	295*185*68(mm)



M2D-CPJ. AT. IMG

M2D measuring application software which base on Windows environment is developed by our company . it can visually analysis the 2D measuring data . It is used in the scanning of dies . It is suitable for the instruments with RS232 interface.



Specialities

- Measure the point, line, circle, arc and ellipse feather with multi-point
- The functions of Axis-skew and coordinate-shift are very convenient
- The functions of element-combination can enhance the efficiency
- MACRO function
- Save as *. dxf and edit in Auto CAD
- The data can be sent to Excel, can draw easy Xbar-S graph
- Shift between in English and Chinese
- Record, edit and run the program

Functions

	M2D-CPJ	M2D-IMG	M2D-AT
Functions	<i>Element measure:</i>	<i>Can measure the Point, Line, Circle, Arc, Angle</i>	<i>Can measure the rectangle with stated points</i>
	<i>Element construct:</i>	<i>Construct the Center, Point of intersection, Midpoint, Line, Circle, Angle</i>	<i>Can identify the Point, Line, Circle and the Arc automatically</i>
	<i>Element preset:</i>	<i>Point, Line, Arc, Angle</i>	
	<i>Graph manage:</i>	<i>Coordinate move and coordinate skew, any axis skew</i>	
	<i>Graph operation:</i>	<i>Zoom in, Zoom out, Move, Print, Select, Cancel select, Delete</i>	
		<i>Set the image 's grayness, saturation, contrast. The image can be saved as *.bmp, the image support S-video input, the image is 640*480</i>	
		<i>Cross detecting</i>	<i>Multiple ways of detecting</i>
		<i>The color of the edge changes</i>	<i>Can gather the point</i>
		<i>Gather the point by manual</i>	<i>automatically.</i>

Computer configuration

Hardware:	CPU-P4 1.7G Memory-128M Serial interface USB interface PCI slots
Operation system:	Windows 2000 Windows xp
Application:	Excel AutoCAD

Measuring function



Can measure the Point, Line, Arc, Ellipse, Rectangle, Distance, Angle.
Can detect the graph element automatically.
Can construct the Center, Point of intersection, Midpoint, Line, Circle, Angle.

Outputting the data



The graph can be sent AutoCAD.
The data can be sent to Notebook, Excel, Word.

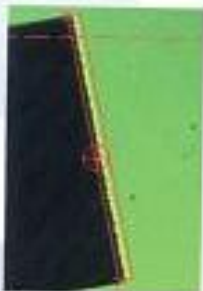
Only function for M2D-AT:

Scanning 2D graph

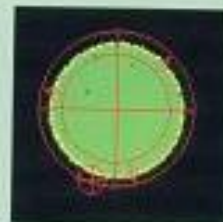
Can scan 2D graph, all are points.
Can be stored as *.DXF and then managed in AutoCAD.



Image detecting automatically



Can automatically detect the Line, Circle, Arc and then grab the image.
By putting the mouse on the edge of the image.



Contrasting function



Can import *.DXF to the program, contrasting with the image, and then standard and the tolerance appear in the Result Column.

Labeling dimension



Can label the dimensions in Graph area and image area.

Direction Indicator



Indicate the position of the next work pieces when with macro measurement.